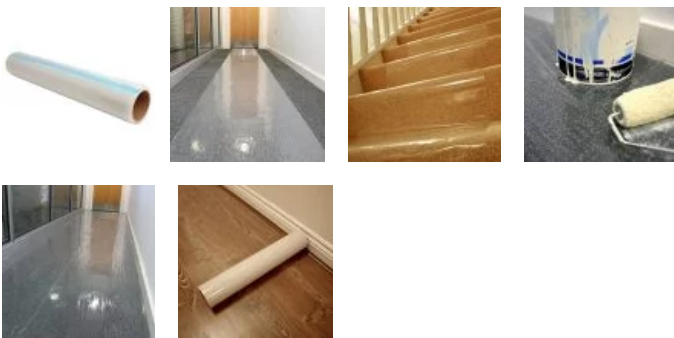
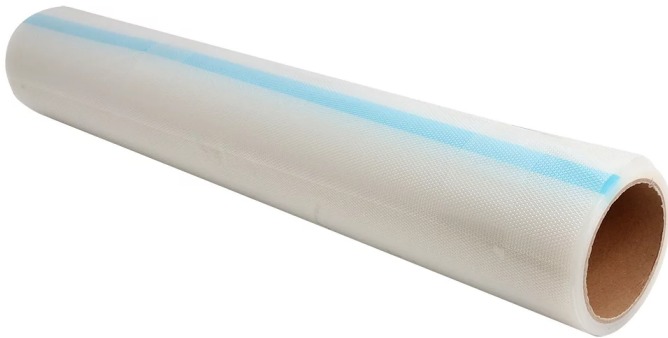


# COBAguard Floor Protection Film

## Self-adhesive floor protection film with hard floor and carpet options

- Adaptable floor protection film for maintenance and show houses etc, to keep floors clean.
- Film is reverse wound on the roll for rapid installation, saving you time.
- Can be installed by hand for smaller rooms / staircases or with an applicator for larger areas.
- Does not leave marks or residues – no cleaning required after use.
- Self-adhesive polyethylene protection film.
- Can be branded with your logo upon request.



### Parts

Part Number	Size	Colour	Weight
CGC00001	0.6 m x 25 m	Carpet	1.50 kg
CGH00001	0.6 m x 25 m	Hard floor	1.00 kg
CGH00002	1.2 m x 25 m	Hard floor	2.00 kg
CGC00002	1.2 m x 25 m	Carpet	2.65 kg
CGH00003	0.6 m x 50 m	Hard floor	2.00 kg
CGC00003	0.6 m x 50 m	Carpet	2.75 kg
CGH00004	1.2 m x 50 m	Hard floor	6.00 kg
CGC00004	1.2 m x 50 m	Carpet	5.20 kg
CGH00005	0.6 m x 100 m	Hard floor	4.00 kg
CGC00005	0.6 m x 100 m	Carpet	4.90 kg
CGH00006	1.2 m x 100 m	Hard floor	8.00 kg
CGC00006	1.2 m x 100 m	Carpet	12.00 kg

### Technical Specification

<b>Material</b>	PE (LDPE and LLDPE) film
<b>Surface Finish</b>	Smooth
<b>Product Height</b>	Hard Floor: 50 microns, Carpet: 90 microns
<b>Operating Temperature</b>	+60°C 160 hours
<b>Environmental Resistance</b>	Suitable for indoor environments
<b>Typical Applications</b>	Temporary protection of carpets and hard floors
<b>Country of Origin</b>	China
<b>Storage and application</b>	The product should be protected against direct sunlight and extremes in temperature and humidity and stored upright in its original packaging. The film should be applied within a 3 month period from the delivery date. The film should be removed within 30 days from the date of lamination. Surface preparation is important. The substrate should be clean and free

from residue, such as dust and oil, when the tape is applied in order to achieve optimum adhesion. Do not press too hard when applying. This may cause the end of the tape to peel. If applying to surfaces treated with machining oil, degrease the surface carefully. Any remains will be a cause for surface contamination or adhesive residue.

---

<b>Adhesion Strength</b>	1-2kg/50 mm
<b>Tensile Strength</b>	≥45 N/mm
<b>Elongation</b>	≥300%
<b>Application Temperature</b>	Cold temperatures can affect the peel strength. Please apply the film at room temperature (+10°C to +30°C).

---

Get in touch | To order FREE samples or arrange a site visit please call +44 (0)116 240 1088 or email [sales@cobaeurope.com](mailto:sales@cobaeurope.com)