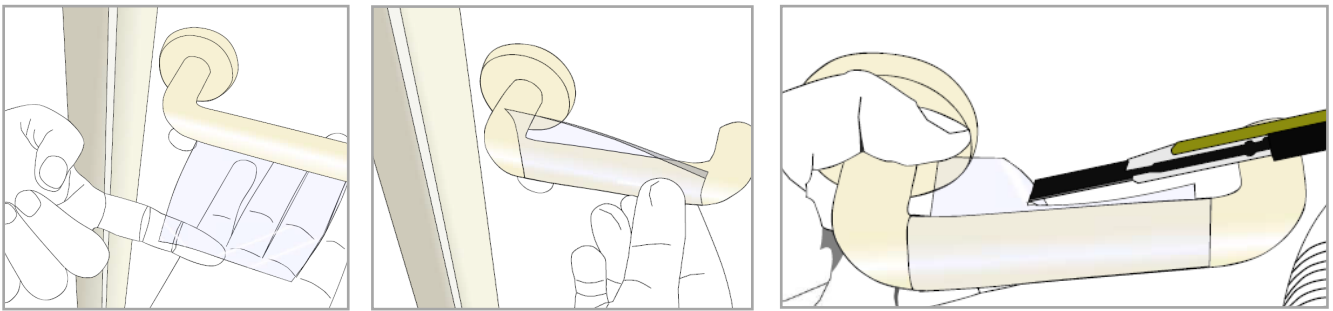


APPLICATION GUIDE

SilvA anti-microbial covering can be applied to a wide variety of surfaces as long as they are clean, dry, smooth, non-porous and free from oil, grease, wax or other contaminant. Always assume that every surface is dirty and needs to be cleaned before application. It is recommended to wear nitrile or vinyl gloves whilst applying.

For standard door handles with a diameter of up to 22mm then use the 70mm x 160mm size. You may want to reduce the length depending on the design of the handle. This is best done with a pair of scissors before removing the backing. Once it has been cut to size remove the backing completely and carefully apply the SilvA along the length of the handle starting on the underside. Continue to apply the film working round the handle and moving your hand from left to right to ensuring adhesion along the whole length. Finish the application with a small overlap onto the other end of the film. You may also want to remove any excess overlap with a sharp craft knife.



For larger handles, balustrading and handrails you can calculate the approximate circumference of the tube (and the width of the SilvA you will need) by multiplying the diameter or width of the tube by 3.2. E.g. if you have a handrail that is 50mm diameter then $50 \times 3.2 = 160$ so our 160mm x 1370 size would probably be a good option.

For small flat surfaces like push plates or Ipads or coffee machine touch screens then you need to again make sure the surface is clean and dry. Start at one end and peel back around 7 - 10cm of the backing and work down, gradually removing the backing as you go. You may find it useful to invest in a small felt-covered squeegee (available on our website). For a touch screen it is best to cut the SilvA slightly over-sized and trim it to size with a sharp craft knife after it has been applied.

It is also possible to apply SilvA to larger surfaces like desk or table tops but this should only be undertaken by professional installers for best results.

We can provide quotations for bespoke sizes - please contact us.