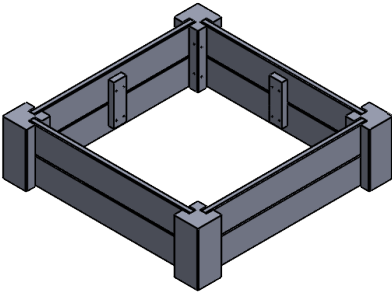
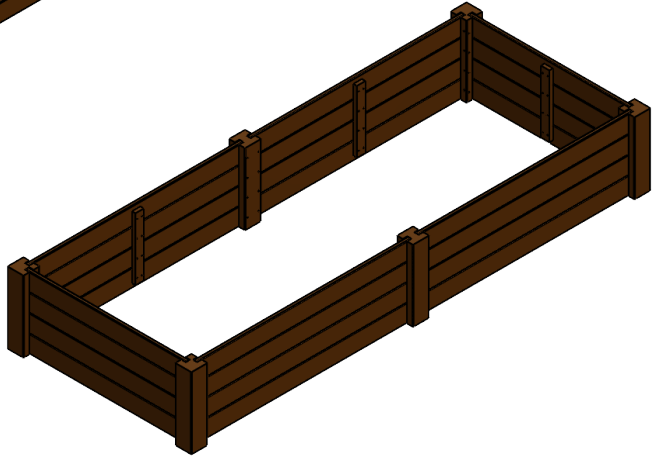
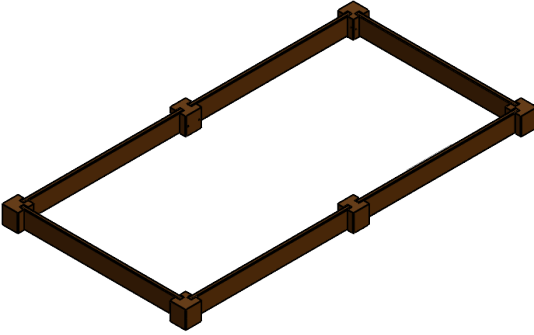
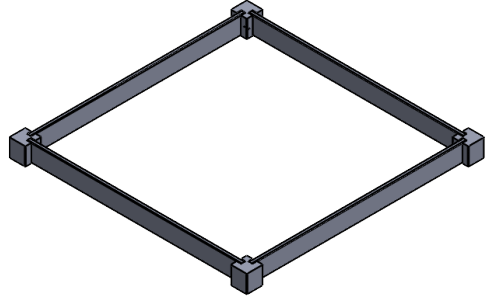


EverYear Elite Raised Beds



Assembly Guide

NBB 
Recycled
Furniture

NBB 
Outdoor
Shelters

NBB 
Premises
& Matting

NBB 
School
Shelters

Notes:

Assembly Guide Overview

This instruction guide covers a multitude of different Planter types and sizes, please refer to the following table.

Please use your "Product Code" to locate the relevant page for your instructions.

Product Code	Description	Page
Type A		
RFPY1248	EverYear Elite Raised Bed L730 x D730 x H100mm	5
RFPY1252	EverYear Elite Raised Bed L1030 x D730 x H100mm	5
RFPY1256	EverYear Elite Raised Bed L1330 x D730 x H100mm	5
RFPY1268	EverYear Elite Raised Bed L1030 x D1030 x H100mm	5
RFPY1272	EverYear Elite Raised Bed L1330 x D1010 x H100mm	5
RFPY1284	EverYear Elite Raised Bed L1330 x D1330 x H100mm	5
Type B		
RFPY1260	EverYear Elite Raised Bed D1970 x D730 x H100mm	6
RFPY1264	EverYear Elite Raised Bed L2570 x D730 x H100mm	6
RFPY1276	EverYear Elite Raised Bed L1970 x D1030 x H100mm	6
RFPY1280	EverYear Elite Raised Bed L2570 x D1030 x H100mm	6
RFPY1288	EverYear Elite Raised Bed L1970 x D1330 x H100mm	6
RFPY1292	EverYear Elite Raised Bed L2570 x D1330 x H100mm	6
Type C		
RFPY1249	EverYear Elite Raised Bed L730 x D730 x H200mm	7
RFPY1250	EverYear Elite Raised Bed L730 x D730 x H300mm	7
RFPY1251	EverYear Elite Raised Bed L730 x D730 x H400mm	7
RFPY1253	EverYear Elite Raised Bed L1030 x D730 x H200mm	7
RFPY1254	EverYear Elite Raised Bed L1030 x D730 x H300mm	7
RFPY1255	EverYear Elite Raised Bed L1030 x D730 x H400mm	7
RFPY1269	EverYear Elite Raised Bed L1030 x D1030 x H200mm	7
RFPY1270	EverYear Elite Raised Bed L1030 x D1030 x H300mm	7
RFPY1271	EverYear Elite Raised Bed L1030 x D1030 x H400mm	7

Table continued overleaf

Assembly Guide Overview Continued

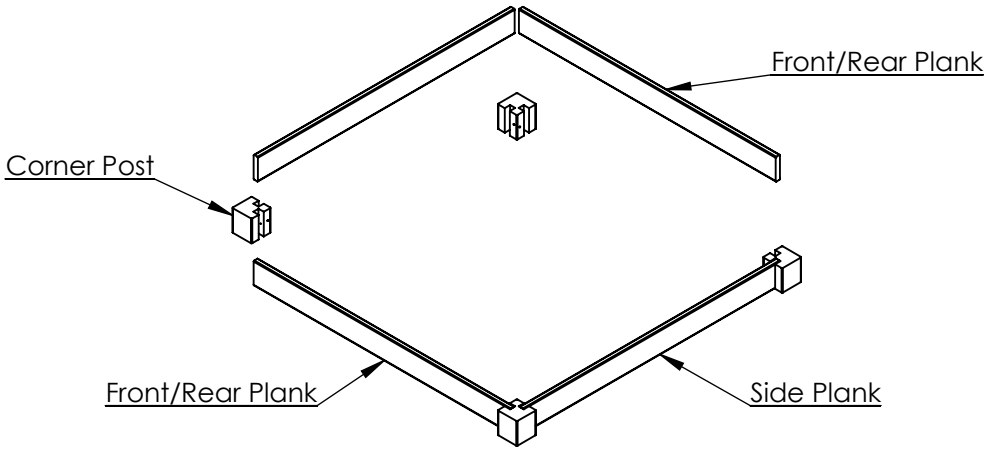
Product Code	Description	Page
Type D		
RFPY1257	EverYear Elite Raised Bed L1330 x D730 x H200mm	8
RFPY1258	EverYear Elite Raised Bed L1330 x D730 x H300mm	8
RFPY1259	EverYear Elite Raised Bed L1330 x D730 x H400mm	8
RFPY1261	EverYear Elite Raised Bed D1970 x D730 x H200mm	8
RFPY1262	EverYear Elite Raised Bed D1970 x D730 x H300mm	8
RFPY1263	EverYear Elite Raised Bed D1970 x D730 x H400mm	8
RFPY1265	EverYear Elite Raised Bed L2570 x D730 x H200mm	8
RFPY1266	EverYear Elite Raised Bed L2570 x D730 x H300mm	8
RFPY1267	EverYear Elite Raised Bed L2570 x D730 x H400mm	8
RFPY1273	EverYear Elite Raised Bed L1330 x D1010 x H200mm	8
RFPY1274	EverYear Elite Raised Bed L1330 x D1010 x H300mm	8
RFPY1275	EverYear Elite Raised Bed L1330 x D1010 x H400mm	8
RFPY1277	EverYear Elite Raised Bed L1970 x D1030 x H200mm	8
RFPY1278	EverYear Elite Raised Bed L1970 x D1030 x H300mm	8
RFPY1279	EverYear Elite Raised Bed L1970 x D1030 x H400mm	8
RFPY1281	EverYear Elite Raised Bed L2570 x D1030 x H200mm	8
RFPY1282	EverYear Elite Raised Bed L2570 x D1030 x H300mm	8
RFPY1283	EverYear Elite Raised Bed L2570 x D1030 x H400mm	8
RFPY1285	EverYear Elite Raised Bed L1330 x D1330 x H200mm	8
RFPY1286	EverYear Elite Raised Bed L1330 x D1330 x H300mm	8
RFPY1287	EverYear Elite Raised Bed L1330 x D1330 x H400mm	8
RFPY1289	EverYear Elite Raised Bed L1970 x D1330 x H200mm	8
RFPY1290	EverYear Elite Raised Bed L1970 x D1330 x H300mm	8
RFPY1291	EverYear Elite Raised Bed L1970 x D1330 x H400mm	8
RFPY1293	EverYear Elite Raised Bed L2570 x D1330 x H200mm	8
RFPY1293	EverYear Elite Raised Bed L2570 x D1330 x H300mm	8
RFPY1294	EverYear Elite Raised Bed L2570 x D1330 x H400mm	8

Type A Instructions

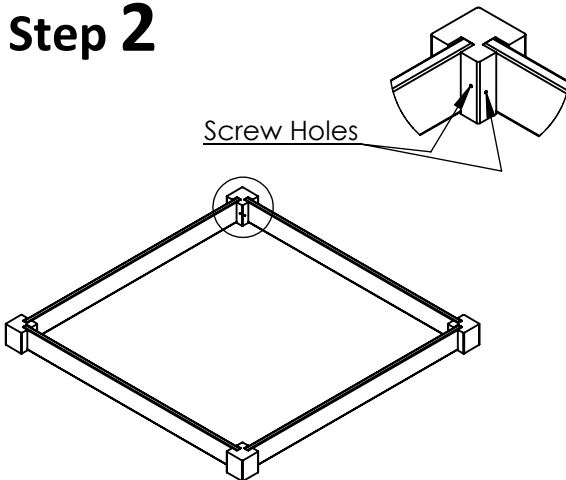
Step 1

The planks will be in pairs typically of two different lengths, please pair up the same length planks and place them either for the front/rear or the side planks.

Place the planks within the slots of the corner posts,



Step 2



With the planks placed into the corner posts, install the supplied screws into the screw holes on the corner posts.

This completes the assembly of your planter.

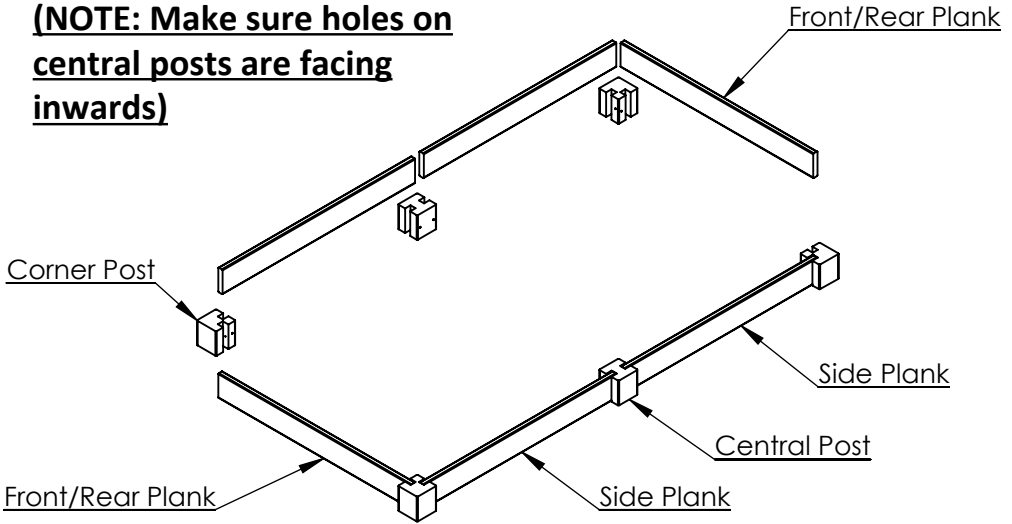
Type B Instructions

Step 1

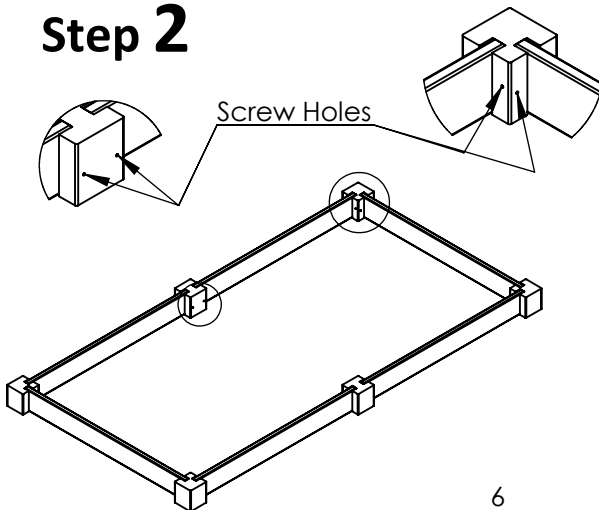
The planks will be in pairs typically of two different lengths, please pair up the same length planks and place them either for the front/rear or the side planks.

Place the planks within the slots of the corner posts, then along the side place the Planks in the slot in the central post.

(NOTE: Make sure holes on central posts are facing inwards)



Step 2



With the planks placed into the corner posts & the central posts, install the supplied screws into the screw holes on the corner posts & central posts.

This completes the assembly of your planter.

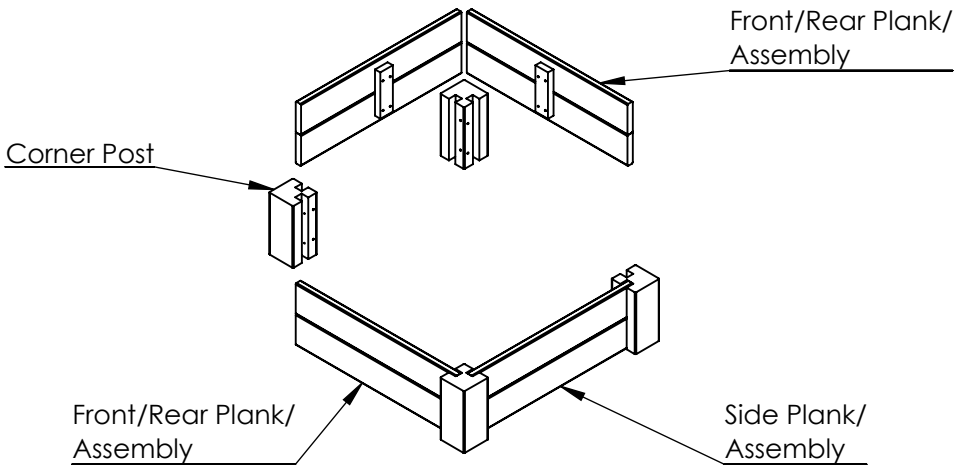
Type C Instructions

Step 1

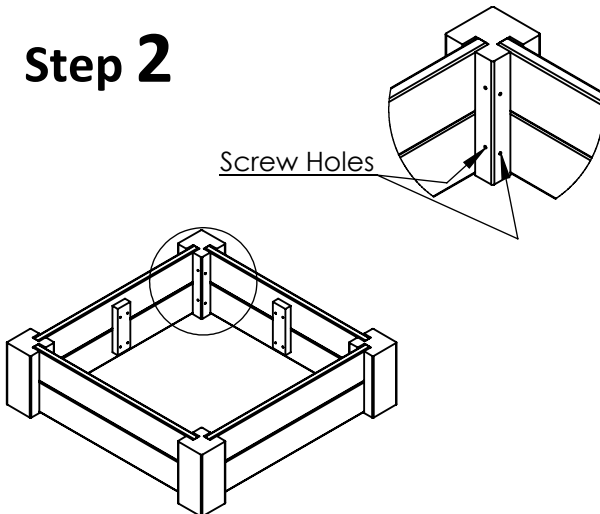
The planks will be in pairs typically of two different lengths, please pair up the same length planks and place them either for the front/rear or the side planks.

Place the planks/plank assemblies within the slots of the corner posts.

(NOTE: Planks which are greater than 600mm Long will need to be secured together with support battons, Please refer to page 10)



Step 2



With the planks/plank assemblies placed into the corner posts, install the supplied screws into the screw holes on the corner posts.

This completes the assembly of your planter.

Type D Instructions

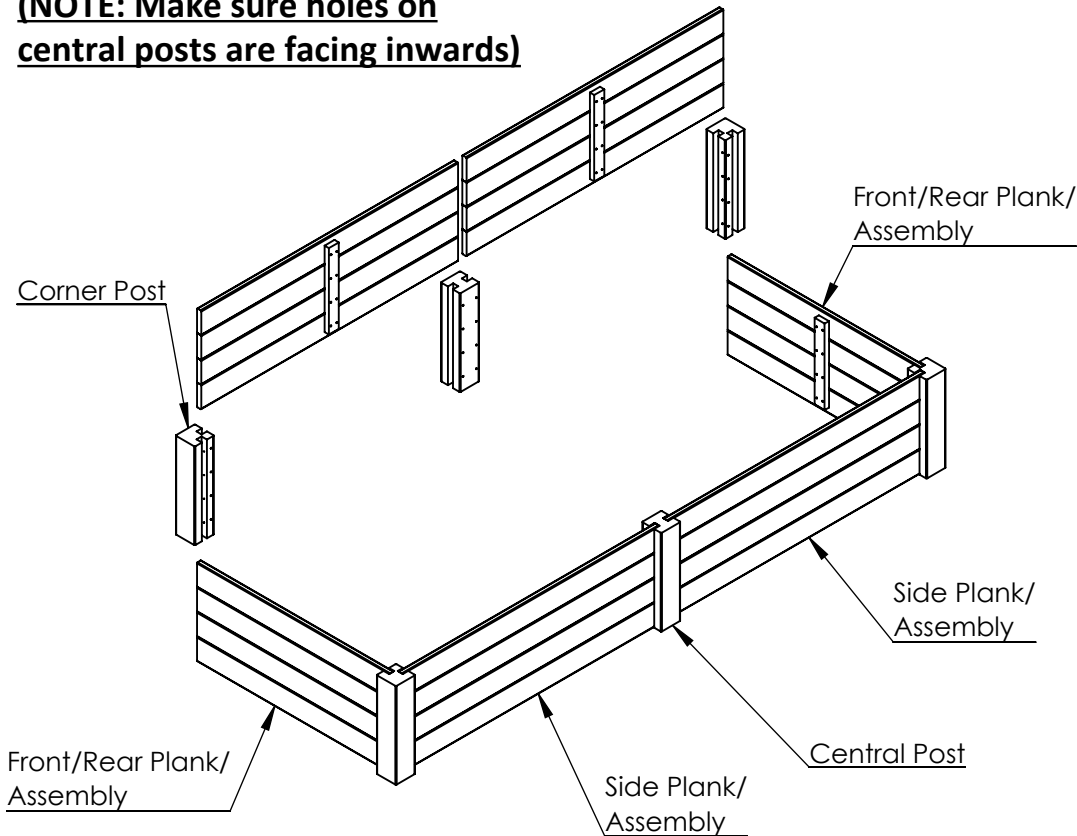
Step 1

The planks will be in pairs typically of two different lengths, please pair up the same length planks and place them either for the front/rear or the side planks.

Place The planks/plank assemblies within the slots of the corner posts, then along the side place the planks/plank assemblies in the slot in the central post.

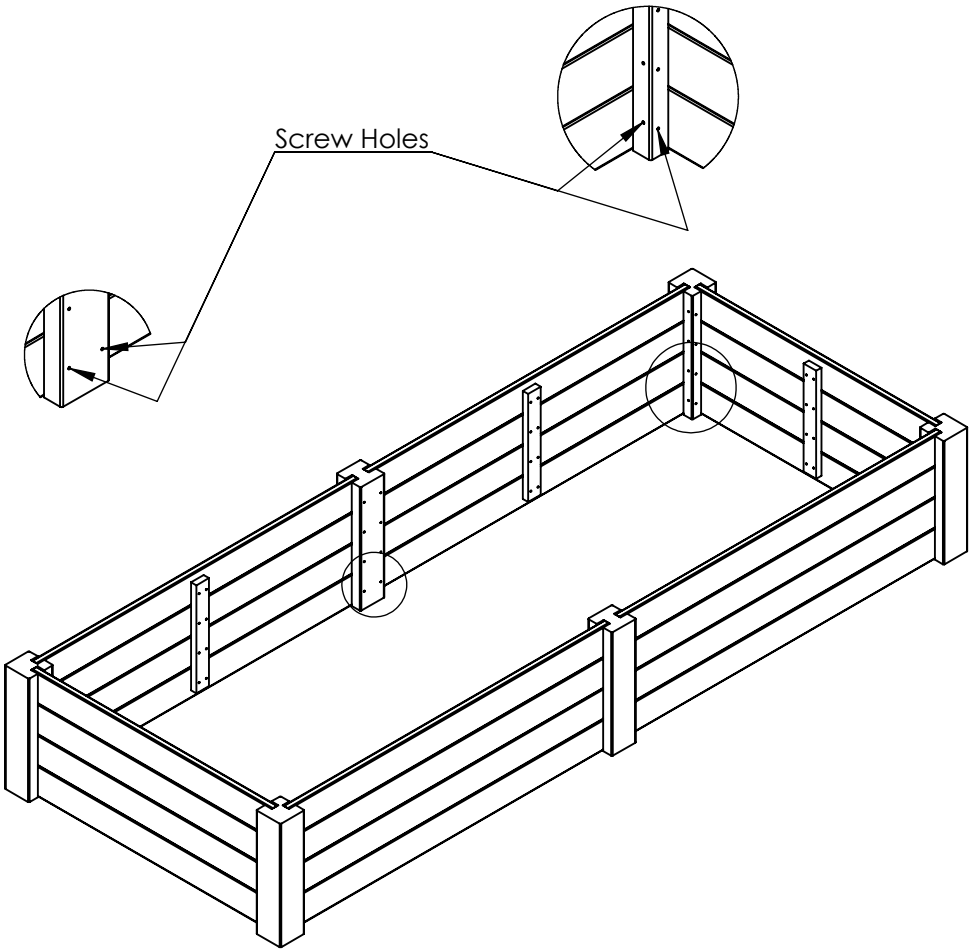
(NOTE: Planks which are greater than 600mm long will need to be secured together with support battons, please refer to page 10)

(NOTE: Make sure holes on central posts are facing inwards)



Instructions continued overleaf

Step 2

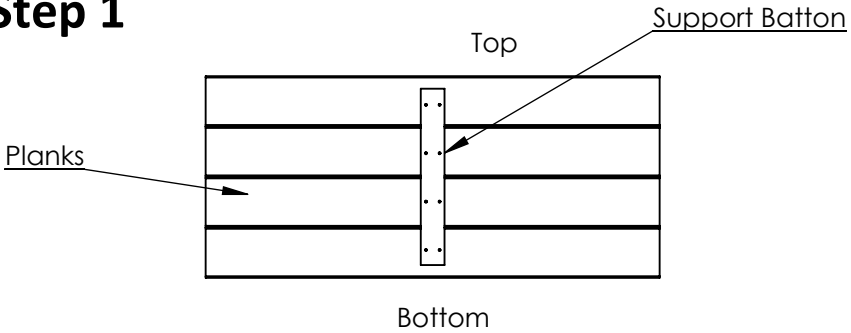


With the planks/plank assemblies placed into the corner posts & the central posts, install the supplied screws into the screw holes on the corner posts & central posts.

This completes the assembly of your planter.

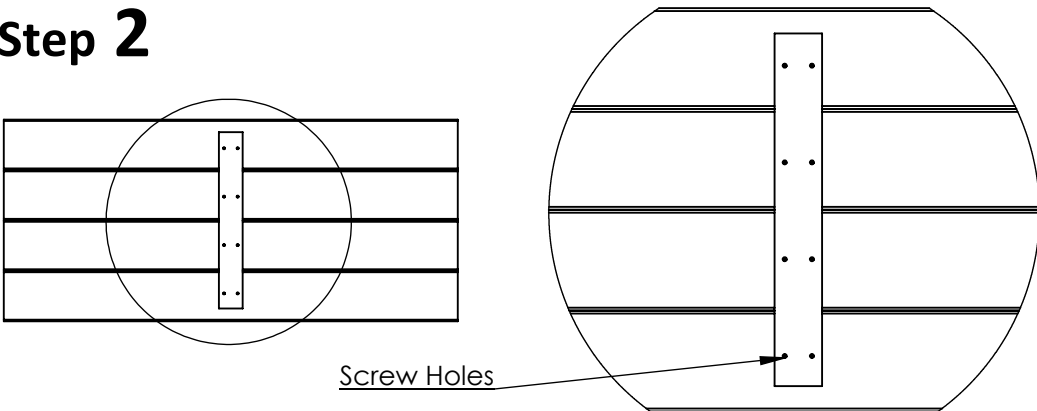
Planks which are greater than 600mm long will need to be secured together with support battons, please refer to the following instructions:

Step 1



Place the corresponding planks onto a flat clean surface, then place the support batton over the top of the Planks. The support batton should be located 25mm from the bottom and top of the planks. Then centralise the central batton on the planks.

Step 2



Once the support batton is located on the planks, please install the supplied screws through the support batton into the planks. Please repeat this process for the appropriate planks & support battons.

This completes the plank assembly, return to you relevant planter assembly to complete the assembly of the planter.

Notes:

THANK YOU FOR PURCHASING THIS PRODUCT

CONTACT DETAILS:

Email : sales@recycledfurniture.co.uk

Web : www.recycledfurniture.co.uk

Tel : 0800 1777 052

NBB Recycled Furniture, Unit 5, 145 Sterte Road, Poole, Dorset BH15 2AF

All Parts and Fixings checked by:	
Print Name:	Signature