

Installation Manual WAITING SHELTER ALMER



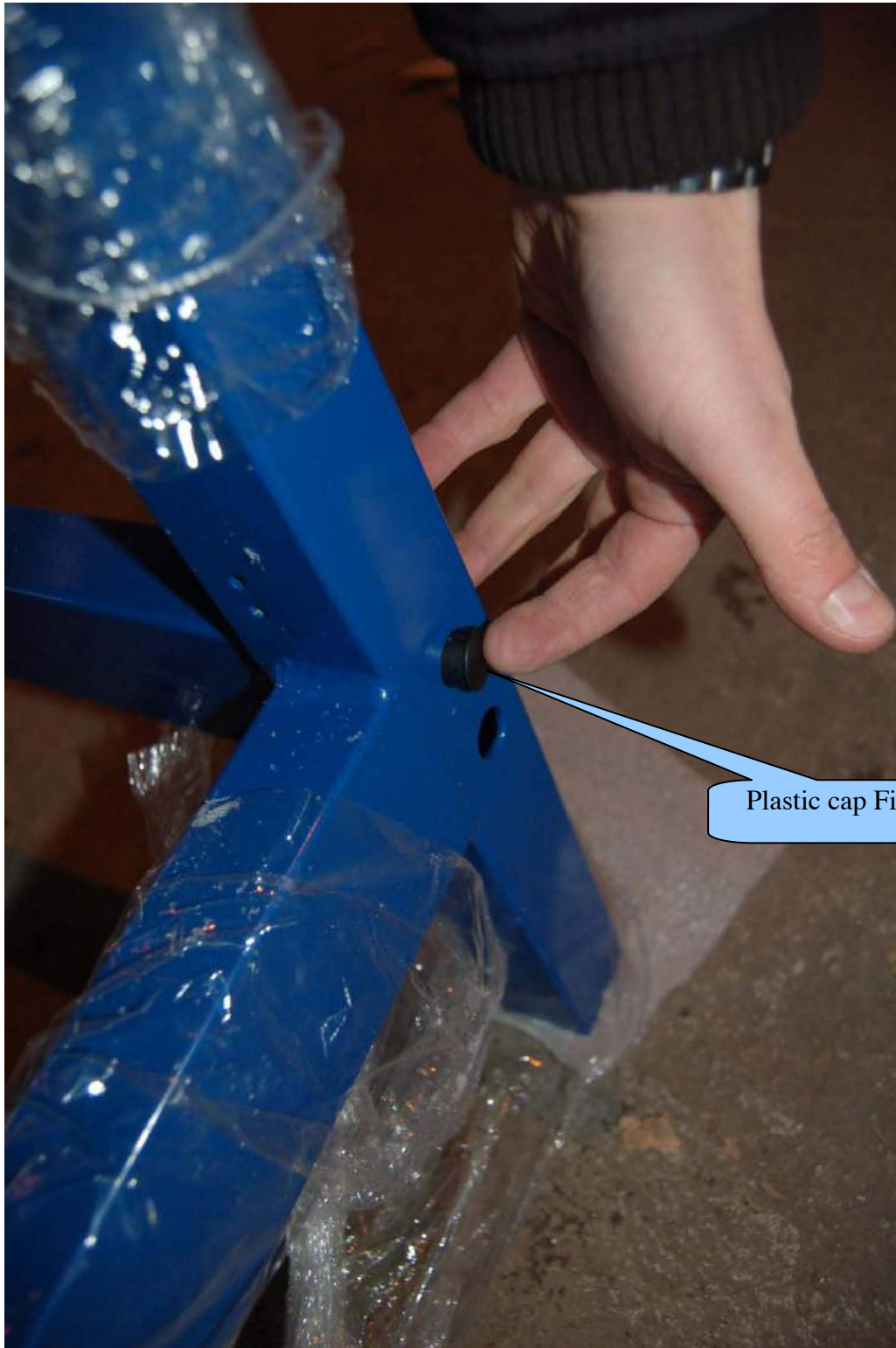
Product Code: SR1696
SR1697
SR1698



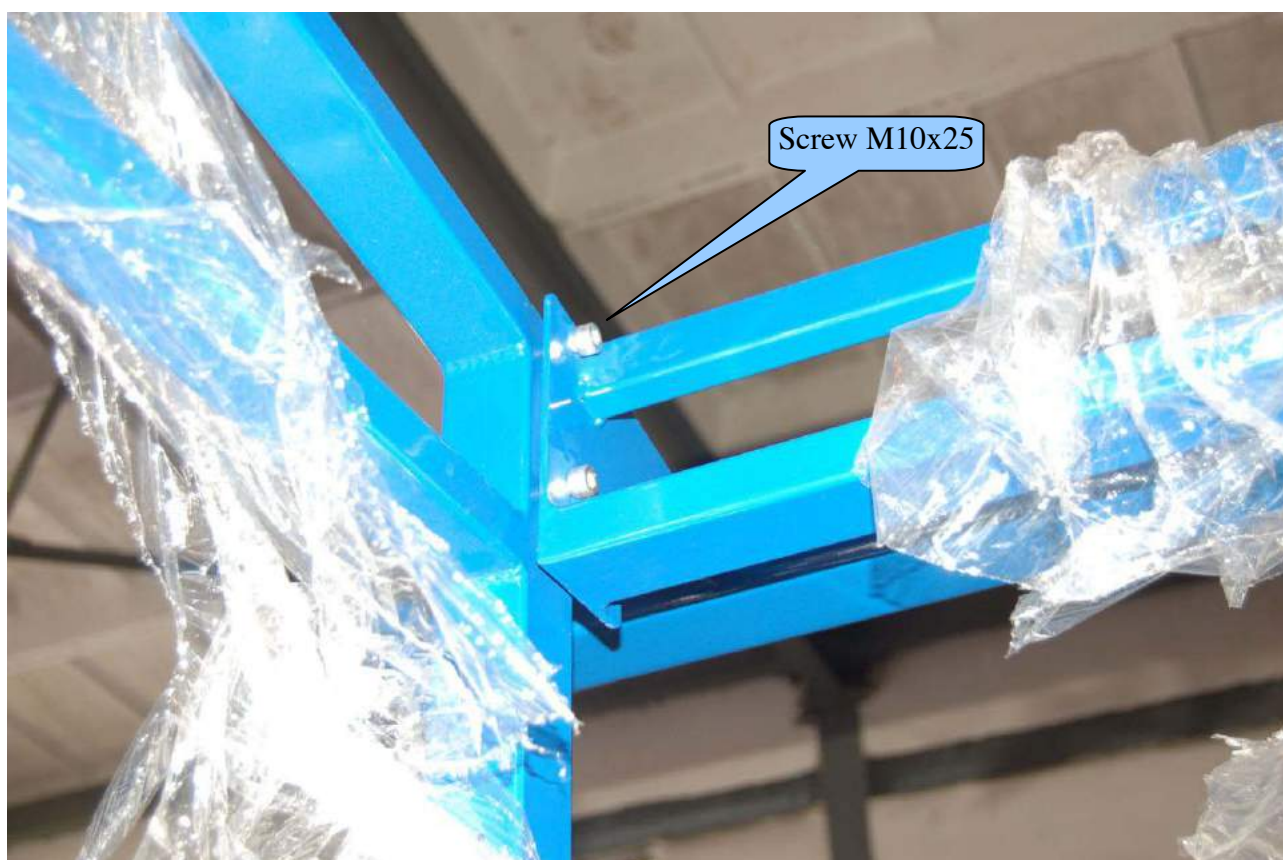
1.Start montage with installing the bottom beam (Nr. 2 on General Arrangement Drawing) to the side walls (Nr. 1 and 3 on General Arrangement Drawing):

- Use screw IMBO M10x25 screws (2 pcs on one side wall)
- After screwing bolts into the holes we put plastic caps fi20





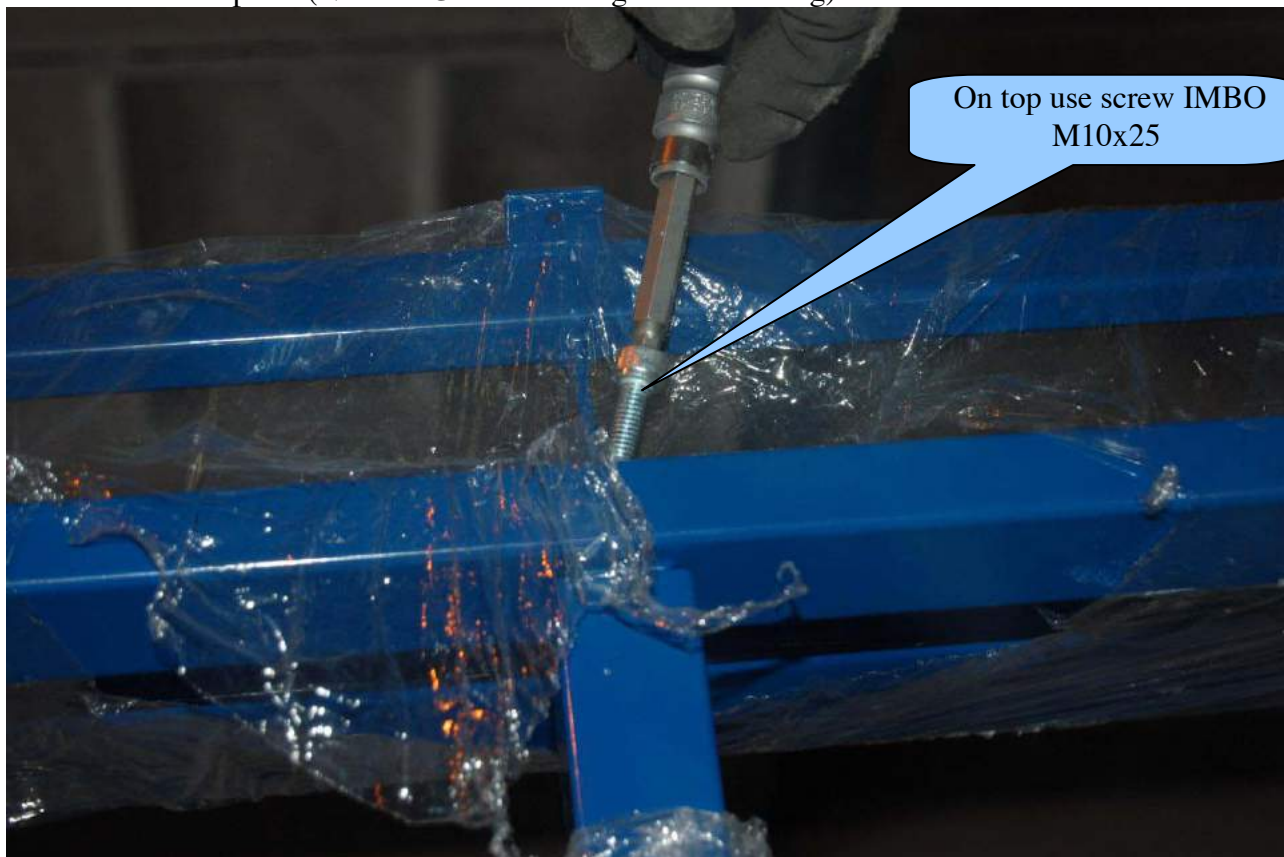
2. After fixing the bottom back beam (Nr. 2 on General Arrangement Drawing) start fixing the upper back and front beams (Nr. 4 on General Arrangement Drawing), using M12x25 bolts.



3. Fix the steel construction of FRONT WALL (Nr. 5 on General Arrangement Drawing) with side wall (Nr. 1 on General Arrangement Drawing) and with the front wall post (Nr. 7 on General Arrangement Drawing) using screw M10x25



4. Fix the middle posts (Nr. 6 on General Arrangement Drawing) as with screws M10x25



NOTE: please make sure the M8 holes are from inside of the shelter in the bottom of the post.



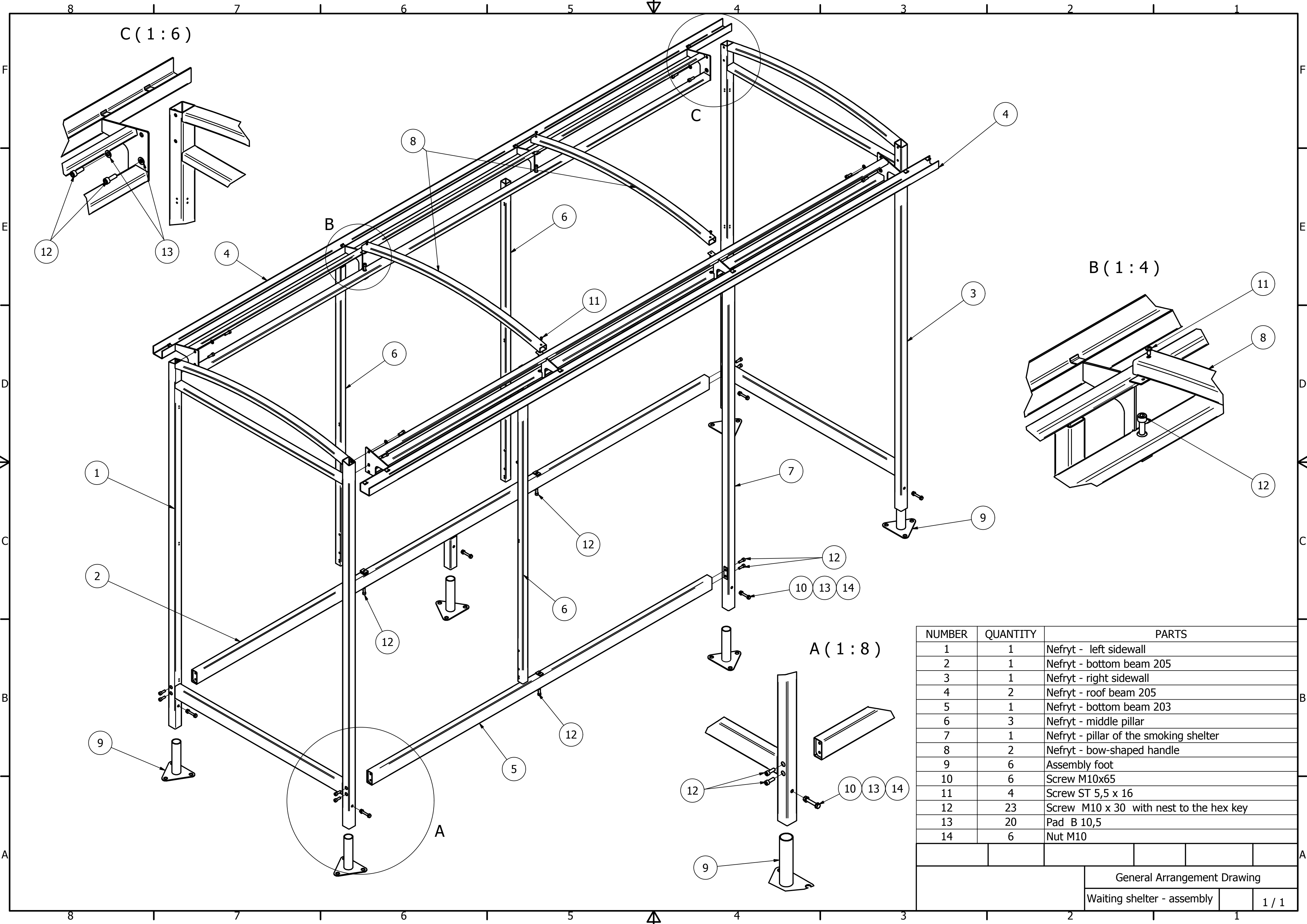


5.Next install the arched roof beams (Nr. 8 on General Arrangement Drawing). From the front and the back use each side 5,5 x 16screw.



6. Fix the roof tapes on two middle roof beams (Nr. 8 on General Arrangement Drawing) using screw 5,5x16.





NUMBER	QUANTITY	PARTS
1	1	Nefryt - left sidewall
2	1	Nefryt - bottom beam 205
3	1	Nefryt - right sidewall
4	2	Nefryt - roof beam 205
5	1	Nefryt - bottom beam 203
6	3	Nefryt - middle pillar
7	1	Nefryt - pillar of the smoking shelter
8	2	Nefryt - bow-shaped handle
9	6	Assembly foot
10	6	Screw M10x65
11	4	Screw ST 5,5 x 16
12	23	Screw M10 x 30 with nest to the hex key
13	20	Pad B 10,5
14	6	Nut M10

						A
			General Arrangement Drawing			
			Waiting shelter - assembly		1 / 1	

7. Fix the polycarbonate with self drilling screw 6,3X25



8.INSTALL THE ANGLE FROM THE BACK SIDE AND FRONT OF SHELTER AND FIX WITH SELF-DRILLING SCREW 6.3 X25



9.FURTHER PROCEED AS BY A TYPICAL SHELTER, install:

- SEAT (BRACKETS + WOODEN DECKS)

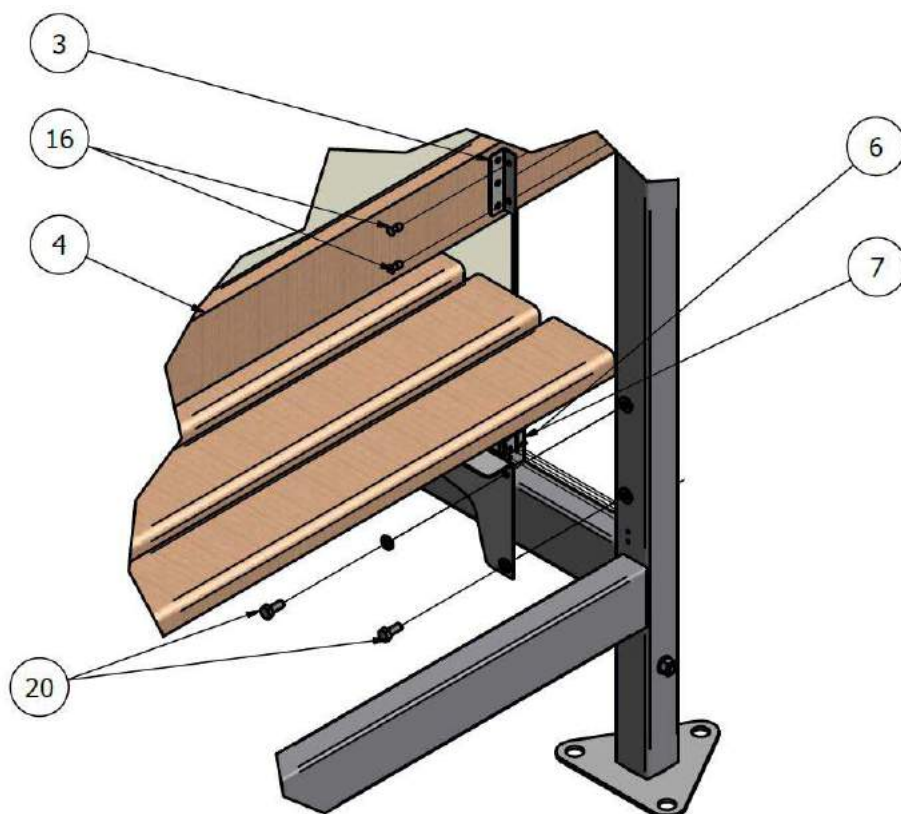
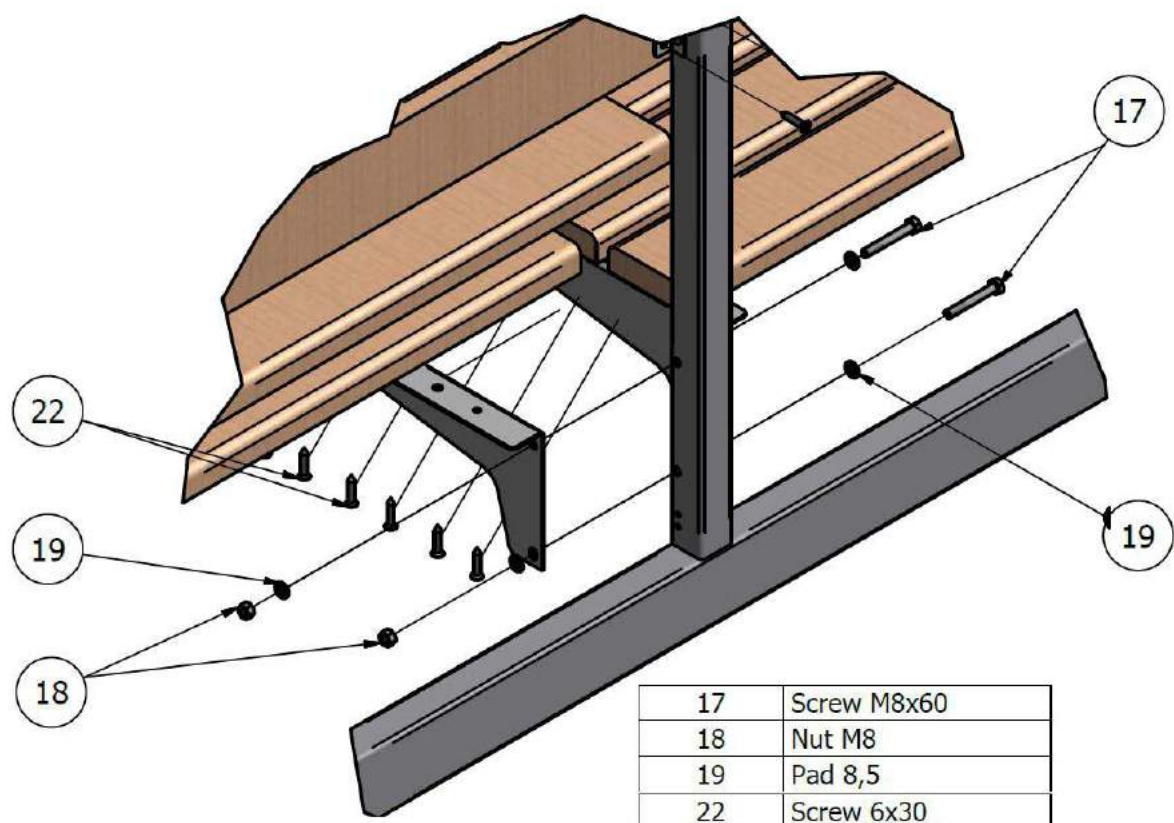
-BACK SEAT SUPPORT

Screw M8x20 + washer M8



Screw M8x60 + Nut M8 + washer M8 (2 pcs)





10. Install the toughened glass retaining brackets with Rivet nut 4,8 x10

Rivet nut 4,8 x10



retaining bracket

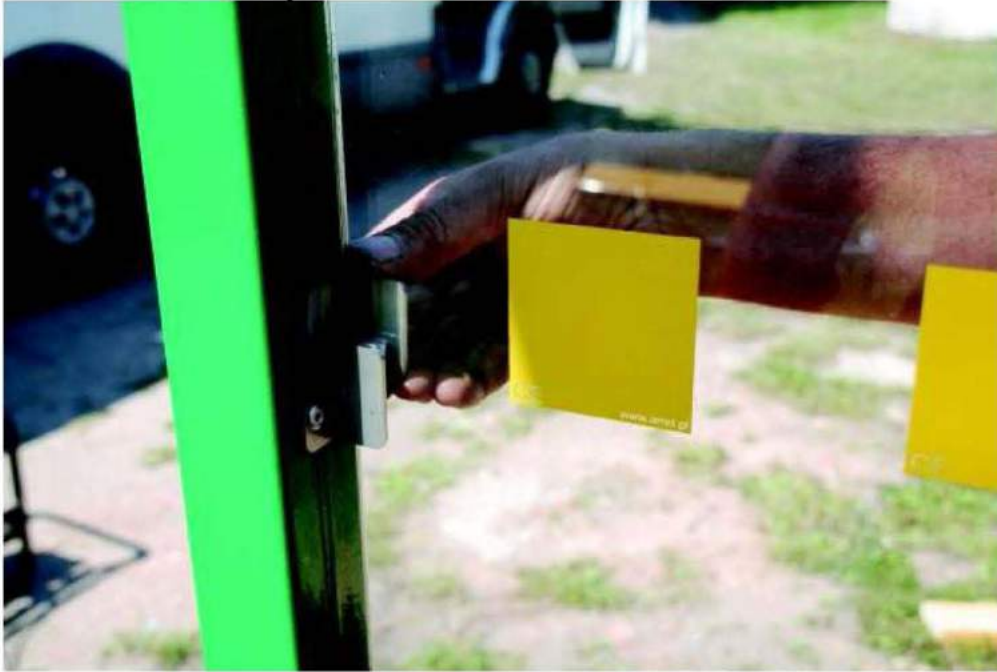


11. Install the toughened glass

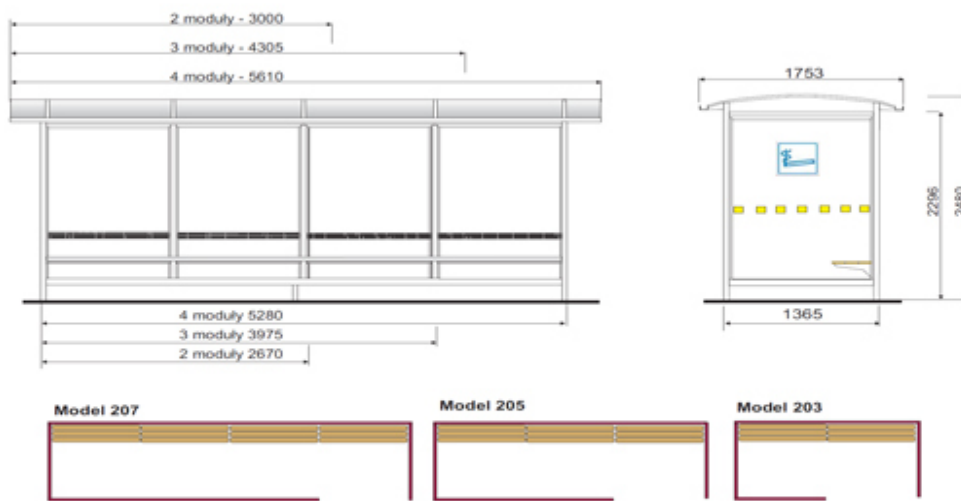


Fix the security glass

Fixing angle + rivet nut 4,8x10



Layout:



NOTES:

THANK YOU FOR PURCHASING THIS PRODUCT

MAINTENANCE:

To ensure your products give you many years of use we recommend that you:

- Clean panels regularly with soapy water
- Ensure all fittings are tight (for example after a big storm)
- Touch up any exposed metal should it get scratched

CONTACT DETAILS:

Email : Sales@shelter4less.co.uk

Web : www.shelters4less.co.uk

Tel : 0800 160 1002

Shelters4Less, Unit 3, 2 Landsdowne Crescent, Bournemouth, BH1 1SA

All Parts and Fixings checked by:	
Print Name:	Signature: